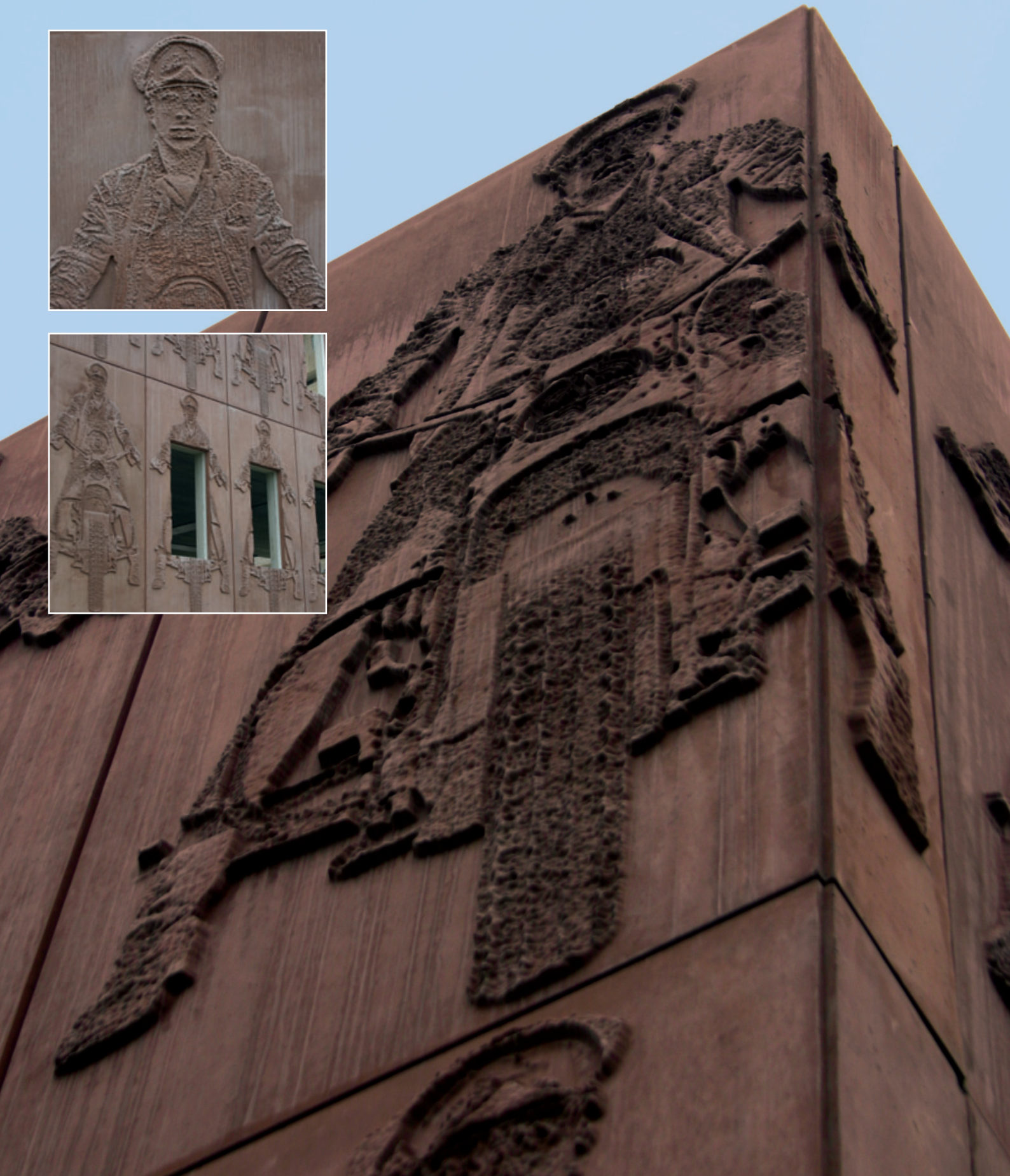




3-D concrete · Jan Cremer Museum



Objekt/Object/Objet: Jan Cremer Motorradfahrer
RECKLI-Matrize/RECKLI Formliner/Matrice RECKLI: Sonderform
Fertigstellung/Completion/Achèvement: 2011
Bauherr/Client/Maitre d'Ouvrage: Cremer Museum, Enschede, Nederland
Planung/Planning/Planification: SeArch Architecten, 1021 JT Amsterdam



RECKLI GmbH
Eschstraße 30 · 44629 Herne
Tel. +49 2323 1706-0 · Fax +49 2323 1706-50
info@reckli.de · www.reckli.de